



Preschool: STEAMing Ahead

Amy Emory-Pupil Personnel
Director



Class of 2031



Eligibility

How do students become eligible for the district preschool program?

Birth to 3 Services

Children are identified before the age of 3 by Birth-3 agency

District “Child Find”

District screening process held throughout the year

Referral from Community Preschools/Providers/Parents

Birth to 3 Process

- 36 agencies across the state
- Referral from the pediatrician or parents
- B-3 team conducts an evaluation
- If eligible, develops an intervention plan (IFSP) which includes services and goals
- Services are provided in the home or at daycare

```
graph LR; A[90 day transition meeting] --> B[PPT to determine eligibility before the age of 3]; B --> C[Implement IEP by age 3]
```

90 day
transition
meeting

PPT to
determine
eligibility before
the age of 3

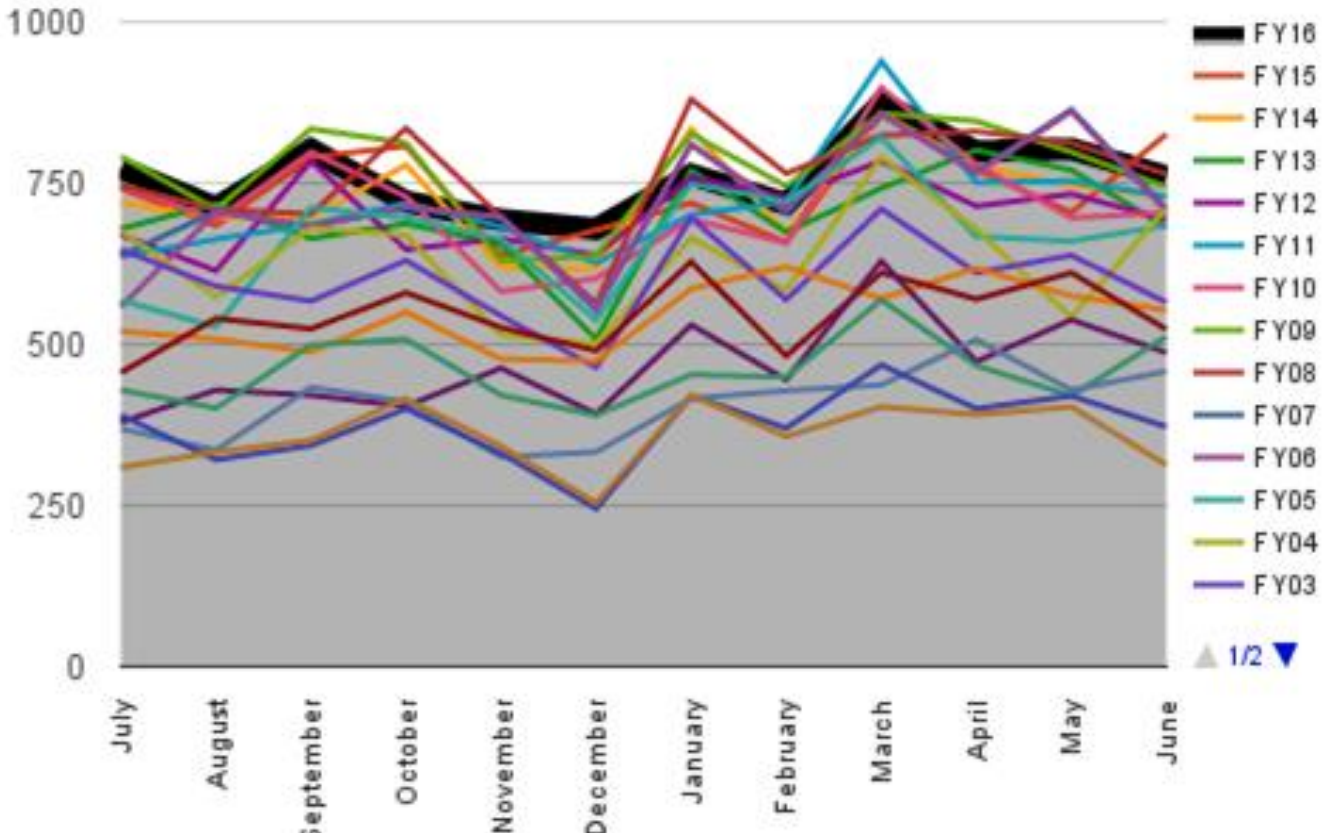
Implement IEP
by age 3

Connecticut Birth-3 System:
Number of Children with IFSPs as of 1st of Each Month
July 2016-January 2017

July	August	September	October	November	December	January
4828	4813	4834	4686	4735	4782	4806

CT B-3 Referral Data (as reported by CT Birth-3 Data System 1/10/17)

18 Years of Monthly Referrals



Greater
Knowledge and
Better Screening
Procedures at an
Early Age

Prevalence Rate of Autism

1 in 68

1 in 42 boys

1 in 189 girls

Child Find

Mandated by law under IDEA which states that “school districts are required to identify children in need of special education services who reside within the district, including children who are educated at home, homeless children, children who are wards of the state and children attending private school.”

Conn. St. Reg. 10-76d-6(a)

Screening Process

- Four times throughout the school year
- Preschool team members
- Developmental Norms
- PPT to evaluate



Community Providers

Daycare providers such as
Dolphin Days and Middlefield
Children's Center

Preschool team will go to do
observations and consultations to
determine if referral is needed or
suggest resources or suggestions
for intervention

Current District Preschool Program

3 year old program

Time: 8:50-11:30

Monday-Thursday

Peer Role Models

Fridays are used for screenings, PPTs, team meetings, observations and consultations at community programs

4 year old program

Time: 12:35-3:10

Monday-Thursday

Peer Role Models

Fridays are used for screenings, PPTs, team meetings, observations and consultations at community programs

Related Services:

- Speech and language services
- Physical Therapy
- Occupational Therapy
- Counseling



What types of disabilities do we service?

Developmental Delay

Speech & Language

Autism

Intellectual Disabilities

Genetic Disorders

Emotional/Behavioral

Medical/Health Impairment

Traumatic Brain Injury

Current Numbers

4 year old program: 12
3 year old program: 18+



This doesn't include 3 additional students who are already in the B-3 referral process between March and June or those students who could become eligible through "child find" process.

21 three year olds
plus addition of
role models

Schedule



2 hours and 40 minutes

Not much time...especially when you are working with 3 and 4 year olds!

Schedule:

8:50-9:00: Transition /Readiness

9:00-9:30: Circle Time

9:30-10:00: Related Arts Special

10:00-10:30: Learning Centers

10:30-11:00: Sensory/Motor Centers

11:00-11:30: Snack and Recess

11:30: Dismissal



This time is even shorter for students with disabilities:

- Have to find time to add in related services with minimal impact to instruction and social opportunities
- Often have multiple related services
- Varying developmental needs of identified students
- Requirements from SDE to conduct assessments of students' progress from the time they enter the program until they transition to kindergarten

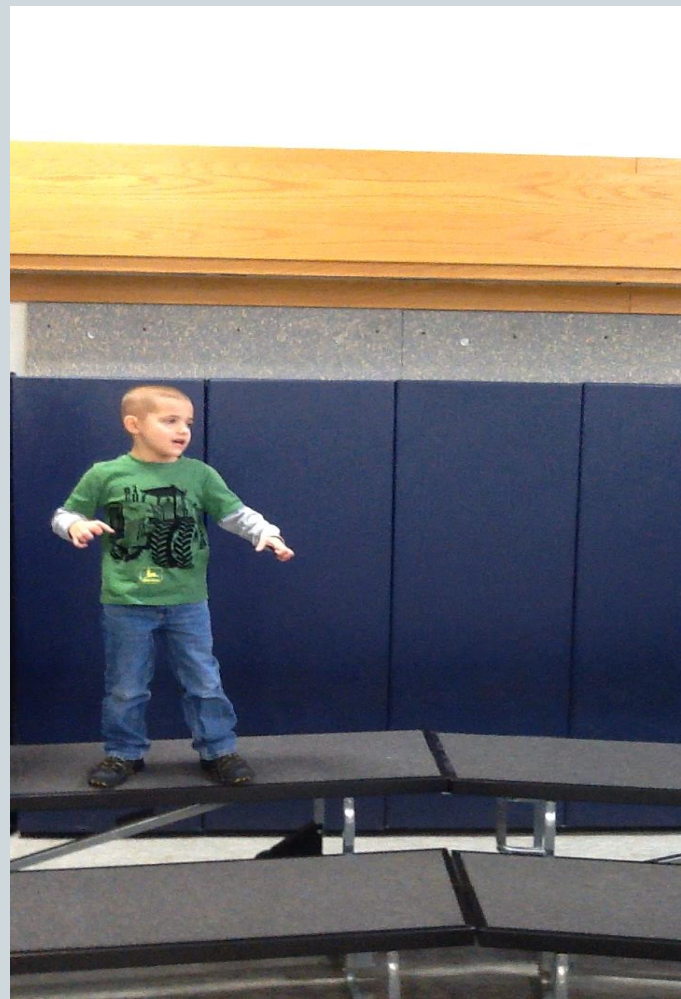
EARLY INTERVENTION



High Quality

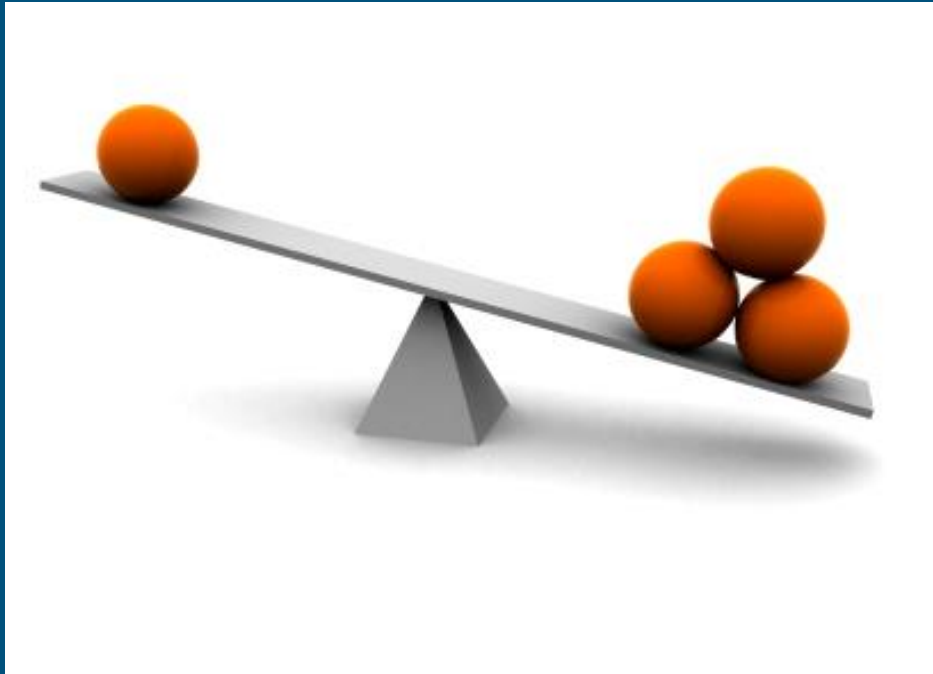
Well designed to meet students'
needs

Intensity and Frequency



More time to....

- Provide critical intervention in the area of identified need
- Provide greater level of instruction in the areas of early literacy and numeracy skills to prepare them for the demands of kindergarten
- Increase the number of students who can benefit from a strong preschool experience
- Provide instruction and early exposure to STEM/STEAM programming



Balance of Opportunity

A Proposed Change to the Program:

4 year old program:

- Monday-Thursday
- 8:50-3:15
- Expansion of early readiness skills and introduction of STEM/STEAM programming

3 year old program:

- Monday-Thursday
- 8:50-1:30
- Expansion of early readiness skills and introduction of STEM/STEAM programming

Class of 2031

Outcome:

Be prepared for a
world that we can't
quite imagine yet!



Thank you!

